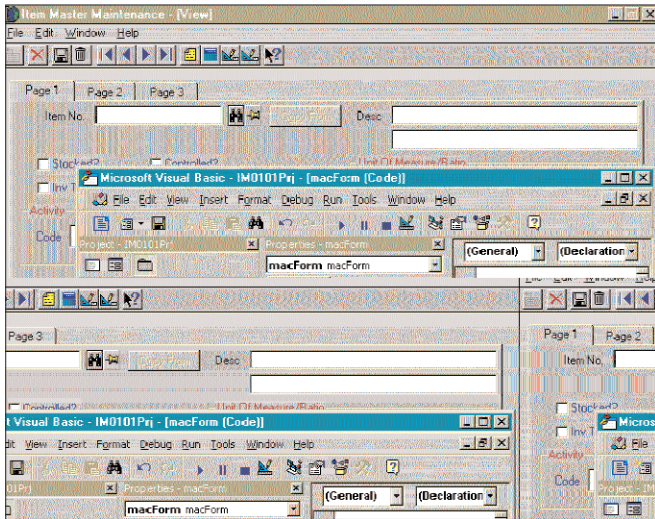


ADDING PROGRESSION'S FLEXIBILITY SUITE TO THE ALREADY POWERFUL PROGRESSION SERIES ENABLES YOUR BUSINESS TO REAP THE VALUE OF GREATER LEVELS OF INTEGRATION BETWEEN INFORMATION, APPLICATIONS AND BUSINESS PROCESSES.



Progression's Flexibility Suite provides field level customization and integration with other applications.

Adding Progression's Flexibility Suite to the already powerful progression series enables your business to reap the value of greater levels of integration between information, applications and business processes.

In choosing the right software solution for your company, you are faced with many important decisions. To find the best solution for your company, the following issues must be seriously considered:

- Does the software meet the needs of your company today and in the future?
- Does it give you easy access to your data?
- Is it flexible enough to accommodate the changing demands of day-to-day business?
- Will it give your organization the ability to integrate your business processes, applications and information?

Finding the answers to these important questions is essential to finding the right solution for your company.

THE FLEXIBILITY SUITE

Progression's Flexibility Suite is a combination of Microsoft's Visual Basic® for Applications (VBA) for Progression, Enterprise Reporting System 5.0 (ERS), and the Progression Developer Tools.

VBA FOR PROGRESSION SERIES

VBA for Progression Series is a high-performance, powerful programming, scripting and configuration tool. It provides many features that help organizations integrate information, applications and processes.

VBA FOR PROGRESSION SERIES CAPABILITIES

- The user/developer can append VBA logic to Progression Series forms based on users' actions
- Users can build their own forms
- Users can interact with Progression's databases directly using Microsoft® technology or ERS 5.0 data objects
- Users can interact with automation servers such as Microsoft Word® and Excel®
- Users can add controls to Progression Series screens and attach VBA logic to them

VBA BENEFITS

- There are in excess of 3,000,000 VB developers capable of modifying the VBA of Progression Series
- Your company's unique business processes can be accommodated and incorporated into Progressions business logic easily
- Databases can be set-up, maintained and accessed easily
- To enhance your software solution, modifications can be done quickly
- VB development is easier and less expensive than traditional multi platform development
- Microsoft® applications and other VBA enabled applications can be easily integrated with the Progression Series



ERS 5.0

ERS 5.0 is a powerful database manipulation tool that combines reporting, query and advanced data mining technology with VBA extensibility and the ability to access multiple database engines simultaneously.

ERS 5.0 CAPABILITIES

- ERS 5.0 can connect to any database supporting ODBC (Open Database Connectivity)
- Over twenty ODBC drivers are included with ERS 5.0
- ERS 5.0 has full VBA integration
- Extensive Microsoft automation support allows easy application integration with programs such as Microsoft Excel® and Word®
- Advanced visual editor allows complex manipulation of reports
- Visual Query Builder allows building of complex queries
- Auto-join intelligence suggests ways to link tables based on field names and past user links
- ERS 5.0 data objects can be used for multithreaded data manipulation
- Real time data mining provides dynamic access to information

ERS BENEFITS

Users have real time access to critical business information with the ability to navigate large amounts of data quickly in a visual environment.

DEVELOPER TOOLS

Progression Developer Tools enhance your Flexibility projects within Progression Series. These tools include

Data Developers Reference Manuals (DDRM)

- Full documentation of the Progression Series architecture
- ERS 5.0 projects to allow dynamic browsing of the Progression Series data structure

DDF EXPLORER

- Progression Series tables and their key indexes are easily viewed

- Can link directly to the Btrieve files

ACTIVEX CONTROLS

- Provides Progression Series ActiveX search tools for the look and feel of a Progression Series search screen without all the programming
- Benefits developers with preexisting code (ActiveX code)
- Components will assist in reducing development time, but maintain the look and feel of user-defined applications

MULTIMEDIA

- Easily link multimedia files into Progression Series including AutoCAD drawing files

PROGRESSION BITMAPS

- Progression Series icons maintain a consistent look and feel across Progression Series and custom modifications

MORE INFORMATION

For more information on how to put the power of Exact Software North America to work in your front office and mission critical back office, call today:

800.468.0834



Exact Software North America
800 Brickstone Square
Andover, MA 01810
Tel: 888.877.5126
Fax: 978.474.9317
Sales: 800.468.0834 ext 550

Boston, MA
Cambridge, ON
Columbus, OH
Houston, TX
Los Angeles, CA
Orlando, FL
San Francisco, CA

www.exactsoftware.com