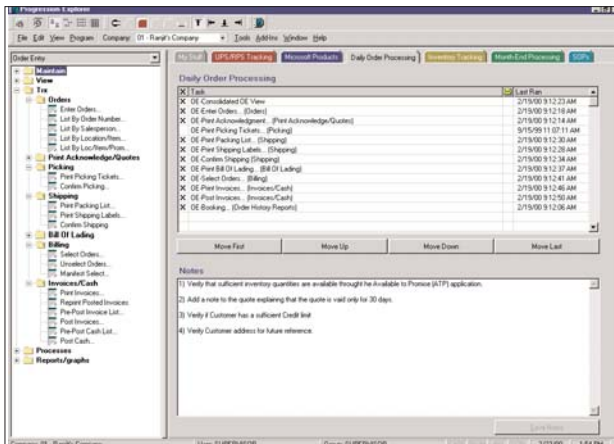


EXACT SOFTWARE NORTH AMERICA OFFERS AN E-BUSINESS SOLUTION THAT INTEGRATES BACKOFFICE ERP, CUSTOMER RELATIONSHIP MANAGEMENT, AND INTEGRATED E-COMMERCE. OUR SOLUTIONS ARE BUILT UPON SUPERIOR BUSINESS APPLICATIONS THAT MAXIMIZE THE POWER OF MICROSOFT TECHNOLOGIES



Progression Workflow Explorer

If you are looking for a business system you are probably focused on finding a solution that provides the ability to meet the demands of today's changing marketplace. The last few years have seen a revolution in how businesses interact with their customers. The electronic marketplace is growing exponentially and the Internet has established new rules in how enterprises conduct business.

INTEGRATED E-COMMERCE APPLICATIONS

Our integrated e-Commerce applications serve as the front end system to allow customers to process their own transactions in both Business-to-Business (B2B) as well as Business-to-Consumer (B2C) environments. Exact Software North America's e-Commerce solution is seamlessly integrated with our ERP applications to help you provide better service to customers and reduce costs while selling more.

ENTERPRISE RESOURCE PLANNING (ERP)

The Progression Series (SQL) is a set of ERP applications based on advanced functionality that provides the backbone to an e-Business solution. E-Commerce can result in a dramatic

increase in business transactions. For this reason the ERP system must process transactions and provide information immediately. Developing a highly successful ERP implementation is the foundation to any successful business strategy. Progression's ERP solution provides powerful Financials, Human Resources, Payroll, Distribution, Advanced Materials Management and Manufacturing applications.

CUSTOMER RELATIONSHIP MANAGEMENT (CRM)

Your business exists because of your customers. Gaining and retaining customers is vital to the success of any business. Customer relationship management improves your ability to satisfy your existing customers and makes prospecting for new customers more efficient. Exact Software North America offers a CRM solution for every type of selling agent or sales situation to move more customers through each stage of your sales cycle. The companies of today and tomorrow must incorporate a whole new way of selling, and Exact Software North America is leading the way.

BUSINESS INTELLIGENCE

In business, change is so rapid that information must be delivered to the desktop quickly. Business Intelligence (BI) provides you with the tools that minimize the time required to make an informed decision.

Exact Software North America is strongly committed to providing users with a series of tightly integrated, highly customizable business intelligence solutions. This commitment can be evidenced in the drill down capability within the Progression Series to the tight integration with best-of-breed industry tools. Exact Software North America offers a number of reporting solutions including Crystal Reports, Progression's Integrated Crystal Reports, the FRx Financial Reporter, and F9 financial reporting tool from Synex.



INTEGRATION & CUSTOMIZATION TOOLS

Exact Software North America provides customization tools that extend the functionality of your core solution and link to other applications. You can eliminate manual processes such as file and data imports, exports, nightly uploads, downloads and other expensive error-prone manual processes.

Progression's Flexibility program uses Microsoft's Visual Basic for Applications to allow developers to write custom applications, and integrate to external applications without modifying source code.

The Progression Workflow Explorer interface serves as a "launch pad" for every Progression application as well as Business Intelligence tools and add-on business applications. The explorer provides multiple customization options while maintaining the look and feel of the Microsoft Windows Explorer. The Explorer provides the ability to create shortcuts for commonly used applications as well as the ability to create workflow tasklists that allow you to organize your work in a specific order. Emails can be attached to tasks and triggered when you launch the tasks.

Progression ERP Screen Designer allows the Progression Screens to be easily customized on a user-by-user basis. You can add and rearrange fields in a screen, establish a list of acceptable values to populate fields, default values for fields and change field names. All of this can be done without touching a line of source code.

PROVEN TECHNOLOGY

Selecting the right business solution application requires a trusted technology partner for solid assurance that the business system you implement will continue to grow as your business does. Exact Software North America offers you a choice between two of the most dominant databases in the market today: Microsoft SQL and Pervasive. Exact Software North America's partnership with Microsoft offers the stability of the most widely used and supported technology platform in the world. Exact Software North America leverages technologies from companies such as Sterling, Seagate and Pervasive to provide superior solutions and performance.

DESIGNED FOR GLOBAL COMMERCE

If you are not doing business on a global scale today, you soon will. Our solutions are designed for international trade. It begins with the management of multi-currency transactions and extends to the ability to support international offices all around the globe. Our global presence means Exact Software North America better understands the business climate and provides features to meet global language, accounting and legal requirements.

MORE INFORMATION

For more information on how to put the power of Exact Software North America to work in your front office and mission critical back office, call today:

800.468.0834



Exact Software North America
800 Brickstone Square
Andover, MA 01810
Tel: 888.877.5126
Fax: 978.474.9317
Sales: 800.468.0834 ext 550

Boston, MA
Cambridge, ON
Columbus, OH
Houston, TX
Los Angeles, CA
Orlando, FL
San Francisco, CA

www.exactsoftware.com

